



## Certificate of Analysis

### Product information

Product name **Nettle Root Extract**  
 Botanical name **Urtica Dioica**  
 Plant part **Root**  
 Country of origin **P.R.CHINA**

### Batch information

Batch no. **4450201**  
 Best Before End **November 2024**

Analysis item	Specification	Result	Analysis test method
Assay	4 to 1		
<b>Organoleptic properties</b>			
Appearance <sup>1</sup>	Fine Brownish Yellow powder	Conform to specification	Visual
Taste	Typical to botanical	Conform to specification	Gustatory
Odor	Typical to botanical	Conform to specification	Olfactory
<b>Physical properties</b>			
Sieve analysis	90% pass 80 mesh	Conform to specification	Mesh screen or equivalent
Moisture content	≤5%	3.12%	IR balance or equivalent
Ash	≤5%	2.80%	2g/525°C/5hrs or equivalent
<b>Heavy metals<sup>2</sup></b>			
Arsenic (As)	≤ 1 ppm	Conform to specification	AA or equivalent
Cadmium (Cd)	≤ 1 ppm	Conform to specification	AA or equivalent
Lead (Pb)	≤ 3 ppm	Conform to specification	AA or equivalent
Mercury (Hg)	≤ 0.1 ppm	Conform to specification	AA or equivalent
Total heavy metals	≤ 10 ppm	Conform to specification	Colorimetry or equivalent
<b>Microbiology</b>			
Total plate count	≤10000cfu/g	Conform to specification	AOAC or equivalent
Yeasts & Molds	≤1000cfu/g	Conform to specification	AOAC or equivalent
Salmonella	Absent/10g	Conform to specification	AOAC or equivalent
E.Coli	Absent/1g	Conform to specification	AOAC or equivalent
Sterilization method	High Temperature & High Pressure Short time (5" - 10")		
Identification	Positive	Conform to specification	TLC
<b>Additional information</b>			



---

## Allergen Statement

We hereby confirm that our product Nettle Root Extract is produced without the use of ingredients and processing aids or are otherwise affected from a carry over that would require mandatory labelling provisions for allergens as foreseen under Directive 2000/13/EC or Regulation 1169/2011/EC.

### **Allergens listed in Annex IIIa of Directive 2000/13/EC as amended by Annex II of Regulation 1169/2011/EC**

The product Nettle Root Extract is produced without the use of ingredients, processing aids or otherwise affected by carry-over that would require mandatory labelling provisions for allergens as foreseen under Directive 2000/13/EC.

This relates to the following substances included in Annex IIIa therein:

- Cereals containing gluten (i.e. wheat, rye, barley, oats, spelt, kamut or their hybridised strains) and products thereof
- Crustaceans and products thereof
- Eggs and products thereof
- Fish and products thereof
- Peanuts and products thereof
- Soybeans and products thereof
- Milk and products thereof
- Nuts i.e. almonds (*Amygdalus communis L.*), hazelnuts (*Corylus avellana*), walnuts (*Juglans regia*), cashews (*Anacardium occidentale*), pecan nut (*Carya illinoiesis (Wagenh.) K. Koch*), Brazil nut (*Bertholletia excelsa*), pistachio nuts (*Pistacia vera*), macadamia nut and Queensland nut (*Macadamia ternifolia*) and products thereof
- Celery and products thereof
- Mustard and products thereof
- Sesame seeds and products thereof
- Sulphur dioxide and sulphites at concentrations of more than 10 mg/kg or 10 mg/litre expressed as SO<sub>2</sub>.
- Lupin and products thereof
- Molluscs and products thereof

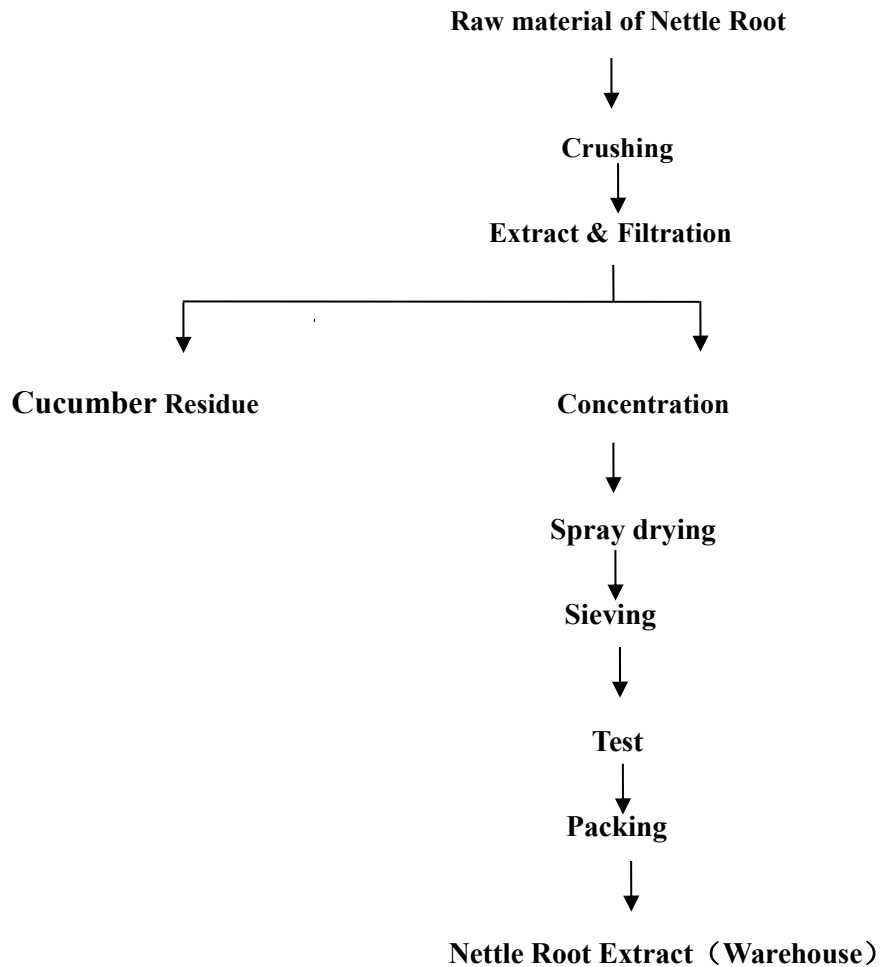
Under the conditions and exceptions specified in Directive 2000/13/EC, latest amendment Regulation (EC) No 1169/2011, we confirm, that this product Nettle Root Extract does not trigger mandatory labelling requirements as laid down in said Directive

---

*March. 31<sup>h</sup>, 2021.*



## Process Flow Chart of Nettle Root Extract





## **CONFIRMATION OF Non GMO STATUS**

**PRODUCT NAME: Nettle Root Extract**

This is to certify that the above-mentioned product is not manufactured from GM raw materials and are therefore not subject to labelling under regulations 1829/2003/EC and 1830/2003/EC. and European Directive 2001/18 and related amendments.

**Date: August**

**28th,2020**



## **CONFIRMATION OF Vegan STATUS**

**PRODUCT NAME: Nettle Root Extract**

This is to certify that the above-mentioned product does not contain any animal products ,and it is qualified as a vegan food and it is processing methods donot include the use of bone char or raw materials containing any animal products and comply with the Food certification .

**Date: August**

**28th,2020**

# MATERIAL SAFETY DATA SHEET

## 1. Product and Company Identification

Product Name: Nettle Root Extract

Company Name: Madar Corporation Limited

Tel: + 44 01425 655 555

E-mail: technical@madarcorporation.co.uk

## 2. Composition/Information on Ingredients

Hazardous Components (Chemical Name)	Percentage	Cas Number	OSHA PEL	ACGIH TLV	Other Limits
Nettle Root Extract	100% Nettle Root Extract	/	No data.	No data.	No data.

## 3. Hazards Identification

**Emergency Overview:** No data available.

**Route(s) of Entry:** Inhalation? Yes Skin? Yes Eyes? Yes Ingestion? Yes Other: Injection

**Potential Health Effects (Acute and Chronic):** Material may be irritating to the mucous membranes and upper respiratory tract. May be harmful by inhalation, ingestion, or skin absorption. May cause eye, skin, or respiratory system irritation. The toxicological properties of this compound have not been fully evaluated.

**Signs and Symptoms Of Exposure:** No data available.

## 4. First Aid Measures

**Emergency and First Aid Procedures:** If inhaled remove to fresh air. If not breathing, give artificial respiration or give oxygen by trained personnel. Get immediate medical attention. If swallowed, wash out mouth with water provided person is conscious. Never give anything by mouth to an unconscious person. Get medical attention. Do NOT induce vomiting unless directed to do so by medical personnel. In case of contact with eyes, hold eyelids apart and flush eyes with plenty of water. After initial flushings, remove any contact lenses and continue flushing for at least 20 minutes. Have eyes examined and tested by medical personnel. In case of skin contact, immediately wash skin with soap and plenty of water. Remove contaminated clothing. Get medical attention if symptoms occur. Wash clothing before reuse.

## 5. Fire Fighting Measures

Flash Pt: No data.

Explosive Limits: LEL: No data. UEL: No data.

Autoignition Pt: No data.

Fire Fighting Instructions: As in any fire, wear self-contained breathing apparatus pressure-demand (MSHA/NIOSH approved or equivalent), and full protective gear to prevent contact with skin and eyes.

Flammable Properties and Hazards: Emits toxic fumes under fire conditions.

Extinguishing Media: Use alcohol foam, carbon dioxide, or water spray when fighting fires involving this material.

Unsuitable Extinguishing Media: No data available.

## 6. Accidental Release Measures

Steps To Be Taken In Case Material Is Released: Wear a NIOSH/MSHA approved self-contained breathing apparatus

Released Or Spilled: and appropriate personal protection (rubber boots, safety goggles, and heavy rubber gloves). Vacuum or sweep up material and place in disposal container. Avoid raising dust. After removal, ventilate contaminated area and flush thoroughly with water.

## 7. Handling and Storage

**Hazard Label Information:** Avoid contact with skin and eyes. Do not reuse this container. Use with adequate ventilation. Wash thoroughly after handling.

### Precautions To Be Taken in Handling:

Avoid breathing (dust, vapor, mist, gas). Avoid contact with eyes, skin, and clothing.

Avoid prolonged or repeated exposure. Do not reuse this container.

Use with adequate ventilation. Wash thoroughly after handling.

**Precautions To Be Taken in Storing:** Keep tightly closed. Store at correct temperature.

## 8. Exposure Controls/Personal Protection

Protective Equipment Summary – Hazard Eye wash station in work area Lab coat Latex disposable gloves

**Label Information:** Safety glasses Safety shower in work area Vent Hood **Respiratory Equipment (Specify Type):** No data available.

**Eye Protection:** Safety glasses

**Protective Gloves:** Latex disposable gloves

**Other Protective Clothing:** Lab coat

**Engineering Controls (Ventilation etc.):** Use process enclosures, local exhaust ventilation, or other engineering controls to control airborne levels below recommended exposure limits.

**Work/Hygienic/Maintenance Practices:** Do not take internally. Facilities storing or utilizing this material should be equipped with an eyewash facility and a safety shower. Wash thoroughly after handling.

## 9. Physical and Chemical Properties

Physical States: Powder

Melting Point: No data.

19-20 Sandleheath Industrial Estate, Fordingbridge, Hampshire, SP6 1PA, UK

Tel: 01425 655555 Email: technical@madarcorporation.co.uk

**Boiling Point:** No data.  
**Flash Pt:** No data. Method:  
**Specific Gravity (Water = 1):** No data.  
**Vapor Density (vs. Air = 1):** No data.  
**Solubility in Water:** No data  
**Corrosion Rate:** No data.  
**Molecular Weight:** No data.  
**Color:** Yellow

**Autoignition Pt:** No data.  
**Explosive Limits:** LEL: No data. UEL: No data.  
**Vapor Pressure (vs. Air or mm Hg):** No data.  
**Evaporation Rate (vs Butyl Acetate=1):** No data.  
**Percent Volatile:** N.A.  
**Formula:** No data.  
**pH:** No data.  
**Appearance and Odor:** Fine powder

## 10. Stability and Reactivity

**Stability:** Unstable [ ] Stable [ X ]

**Conditions To Avoid - Instability:** protect from moisture

**Incompatibility - Materials To Avoid:** strong oxidizing agents  
monoxide

**Hazardous Decomposition Or Byproducts:** carbon dioxide carbon

**Hazardous Polymerization:** Will occur [ ] Will not occur [ X ]

**Conditions To Avoid – Hazardous** No data available. **Polymerization:**

## 11. Toxicological Information

Toxicological Information: The toxicological effects of this compound have not been thoroughly studied

Carcinogenicity/Other Information: No data available.

Carcinogenicity: NTP? No IARC Monographs? No OSHA Regulated? No

## 12. Ecological Information

**Ecological Information:** Run off from fire control or dilution water may cause pollution.

## 13. Disposal Considerations

Waste Disposal Method: Dispose in accordance with local, state and federal regulations.

## 14. Transport Information

LAND TRANSPORT (US DOT)

DOT Proper Shipping Name: No data available.

Additional Transport Information: Transport in accordance with local, state, and federal regulations.

## 15. Regulatory Information

### US EPA SARA Title III

Hazardous Components (Chemical Name)	CAS #	Sec.302 (EHS)	Sec.304 RQ	Sec.313 (TRI)	Sec.110
Nettle Root Extract	/	No	No	No	No

### US EPA CAA,CWA,TSCA

Hazardous Components (Chemical Name)	CAS #	EPA CAA	EPA CWA NPDES	EPA TSCA	CA PROP65
Nettle Root Extract	/	No	No	No	No

SARA (Superfund Amendments and Reauthorization Act of 1986) Lists

Reauthorization Act of 1986 ) Lists :

Sec.302 EPA SARA Title III Section 302 Extremely Hazardous Chemical with TPQ indicates 10000 LB TPQ if not volatile .

Sec.304 EPA SARA Title III Section 304:Cercla Reportable + Sec.302 with Reportable Quantity . Indicates statutory RQ.

Sec.313: EPA SARA Title III Section 313 Toxic Release Inventory. Note:-Cat indicates a member of a chemical category.

Sec.110: EPA SARA 110 Superfund Site Priority Contaminant List

TSCA (Toxic Substances Control

Act) Lists:

5A(2): Chemical Subject to Significant New Rules (SNURS)

6A: Commercial Chemical Control Rules

8A: Toxic Substances Subject To Information Rules on Production

8A CAIR: Comprehensive Assessment Information Rules - (CAIR)

8A PAIR: Preliminary Assessment Information Rules - (PAIR)

8C: Records of Allegations of Significant Adverse Reactions

8D: Health and Safety Data Reporting Rules

8D TERM: Health and Safety Data Reporting Rule Terminations

Other Important Lists:

CWA NPDES: EPA Clean Water Act NPDES Permit Chemical

CAA HAP: EPA Clean Air Act Hazardous Air Pollutant

CAA ODC: EPA Clean Air Act Ozone Depleting Chemical (1=CFC, 2=HCFC)

CA PROP 65: California Proposition 65

## 16. Other Information

Additional Information About This Product: References: Not available.

Other Special Considerations: Not available.

The information above is believed to be accurate and represents the best information currently available to us. However, we make no warranty of merchantability or any other warranty, express or implied, with respect to such information, and we assume no liability resulting from its use. Users should make their own investigations to determine the suitability of the information for their particular purposes. In no event shall ScienceLab.com be liable for any claims, losses, or damages of any third party or for lost profits or any special, indirect, incidental, consequential or exemplary damages, howsoever arising, even if ScienceLab.com has been advised of the possibility of such damages



**Product**

Name	<b>Nettle Root Extract</b>
Botanical name	Urtica Dioica
Plant part	Root
Country of origin	P.R.CHINA

***Nettle Root Extract***

**Physical and Chemical Properties**

Appearance <sup>1</sup>	Brownish Yellow, FINE POWDER	Visual
Taste	Typical to botanical	Gustatory
Odor	Typical to botanical	Olfactory
Sieve analysis	80	Mesh screen
Moisture	≤5%	IR balance
Ash	≤5%	2g/525°C/5hrs

**Microbiology**

Total plate count	≤10000cfu/g	AOAC
Yeasts & Molds	≤1000cfu/g	AOAC
Salmonella	Absent/10g	AOAC
E.Coli	Absent/1g	AOAC
Sterilization method	High Temperature & High Pressure Short time (5" - 10")	

**Packaging | Storage<sup>3</sup>**

Packaging	Carton drum   inner double layer plastic bag
Storage	Cool, dry, dark, airtight environment. Storage of products at room temperature Keep away from sunshine and moisture Reclose packaging tightly after use
Re-test date	24 months after manufacture date in original packaging and advised storage condition

**Heavy metals<sup>2</sup>**

Arsenic (As)	≤ 1 ppm	AA or equivalent
Cadmium (Cd)	≤ 1 ppm	AA or equivalent
Lead (Pb)	≤ 3 ppm	AA or equivalent
Mercury (Hg)	≤ 0.1 ppm	AA or equivalent
Total heavy metals	≤ 10 ppm	Colorimetry or eq.
Identification	Positive	TLC

**Additional product information**

Composition	
Assay	4 to 1